

OWNER AND DEVELOPER
PERRY HILLS ASSOCIATES
 c/o RAYMOND MALCOLM
 4791 MUNSON ST. N.W.
 CANTON, OHIO 44718
 PHONE: (330) 494-8144
 FAX: (330) 494-7876

RECORD PLAT
 OF
PERRY HILLS VILLAGE No. 3

AN ALLOTMENT
 LOCATED IN PART OF THE SOUTHWEST QUARTER OF SECTION 23,
 TOWNSHIP-10 (PERRY TWP.), RANGE-9,
 STARK COUNTY, OHIO

SCALE: 1" = 60' JANUARY 2005

LEGEND OF SYMBOLS AND ABBREVIATIONS

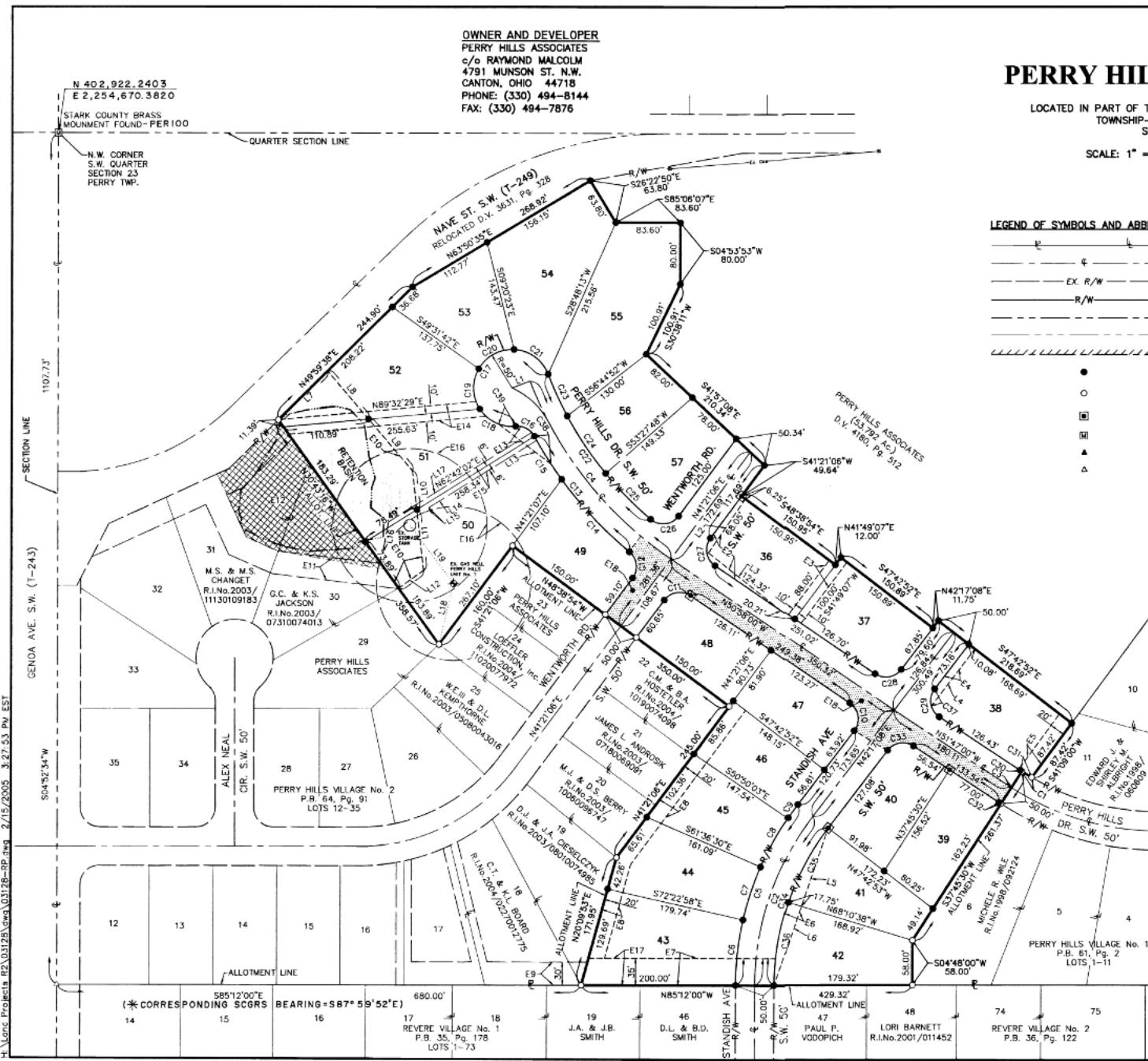
	PROPERTY/LOT LINE
	CENTERLINE
	EXIST. RIGHT-OF-WAY
	PROP. RIGHT-OF-WAY
	QUARTER SECTION LINE
	SECTION LINE
	CORPORATION LINE
	1/2" IRON BAR WITH COOPER & ASSOC. CAP SET
	1/2" IRON BAR WITH COOPER & ASSOC. CAP FOUND UNLESS OTHERWISE NOTED
	MONUMENT SET
	MONUMENT FOUND
	MAG NAIL SET
	P.K. NAIL FOUND

200507060043942

DESIGNATES THE PUBLIC STORM WATER RUNOFF CONTROL AND WATER QUALITY RETENTION BASIN EASEMENT AREA

BY MEANS OF THIS PLAT - PERRY HILLS ASSOCIATES HEREBY GRANTS AND ASSIGNS TO THE OWNERS OF LOTS 50, 51 & 52 THE FOLLOWING RIGHTS, RESPONSIBILITIES AND RESTRICTIONS:

- MAINTENANCE AND REPAIRS OF THE BASIN SHALL BE DONE IN ACCORDANCE WITH THE APPROVED STORM WATER QUALITY MAINTENANCE PLAN ON FILE WITH THE STARK COUNTY SOIL & WATER CONSERVATION DISTRICT. IN ADDITION THE OPERATION, CAPACITY AND GEOMETRY OF THE BASIN SHALL BE MAINTAINED IN ACCORDANCE WITH THE APPROVED CONSTRUCTION PLANS ON FILE WITH THE STARK COUNTY SUBDIVISION ENGINEER.
- ALL STORM SEWER PIPE INLETS AND OUTLETS TO AND FROM THE BASIN SHALL BE KEPT FREE OF DEBRIS/BLOCKAGE AS NECESSARY TO FUNCTION PROPERLY.
- ALL COSTS ASSOCIATED WITH SAID MAINTENANCE AND REPAIR SHALL BE BORNE BY THE LOT OWNER/OWNERS ON WHICH THE MAINTENANCE AND REPAIRS WERE PERFORMED.
- NO SWING SETS OR OTHER PLAY/WORK EQUIPMENT, MULCHED LANDSCAPE BEDS OR STRUCTURES OF ANY KIND ARE PERMITTED WITHIN THE DEFINED LIMITS OF THE EASEMENT AREA.



RECORD PLAT
 PERRY HILLS VILLAGE No. 3
 FOR: PERRY HILLS ASSOCIATES
 PREPARED BY: J. ASHMAN
 CHECKED BY: J. ASHMAN
 DATE: JANUARY 2005
 SHEET 2 OF 3
 PROJ# 03128

H:\Lance\Projects\12\0112\12\44\03128-RE.dwg 2/15/2005 3:27:53 PM EST